



REGIONAL SPECIALISED METEOROLOGICAL CENTRE -TROPICAL CYCLONES, NEW DELHI TROPICAL WEATHER OUTLOOK

DEMS-RSMC TROPICAL CYCLONES NEW DELHI DATED 08.07.2025

TROPICAL WEATHER OUTLOOK FOR THE NORTH INDIAN OCEAN (THE BAY OF BENGAL AND THE ARABIAN SEA) VALID FOR THE NEXT 168 HOURS ISSUED AT 0600 UTC OF 08.07.2025 BASED ON 0300 UTC OF 08.07.2025.

BAY OF BENGAL:

Yesterday's **low pressure area** over southwest Gangetic West Bengal & neighborhood lay over Gangetic West Bengal & neighbourhood at 0000 UTC and persisted over the same region at 0300 UTC of today, the 08th July 2025. The associated cyclonic circulation extended upto 7.6 km above mean sea level. It is likely to move slowly west-northwestwards across Jharkhand and north Chhattisgarh during next 2 days.

Scattered to broken low and medium clouds with embedded intense to very intense convection lay over north, southeast Bay of Bengal and south Andaman Sea. Scattered low and medium clouds with embedded moderate to intense convection lay over central Bay of Bengal and north Andaman Sea.

*PROBABILITY OF CYCLOGENESIS (FORMATION OF DEPRESSION) DURING NEXT 168 HRS:

24 HOURS	24-48 HOURS	48-72 HOURS	72-96 HOURS	96-120 HOURS	120-144 HOURS	144-168 HOURS
NIL	NIL	NIL	NIL	NIL	NIL	NIL

***NOTE: EVERY 24HR FORECAST IS VALID UPTO 0300 UTC (0830 IST) OF NEXT DAY**

ARABIAN SEA:

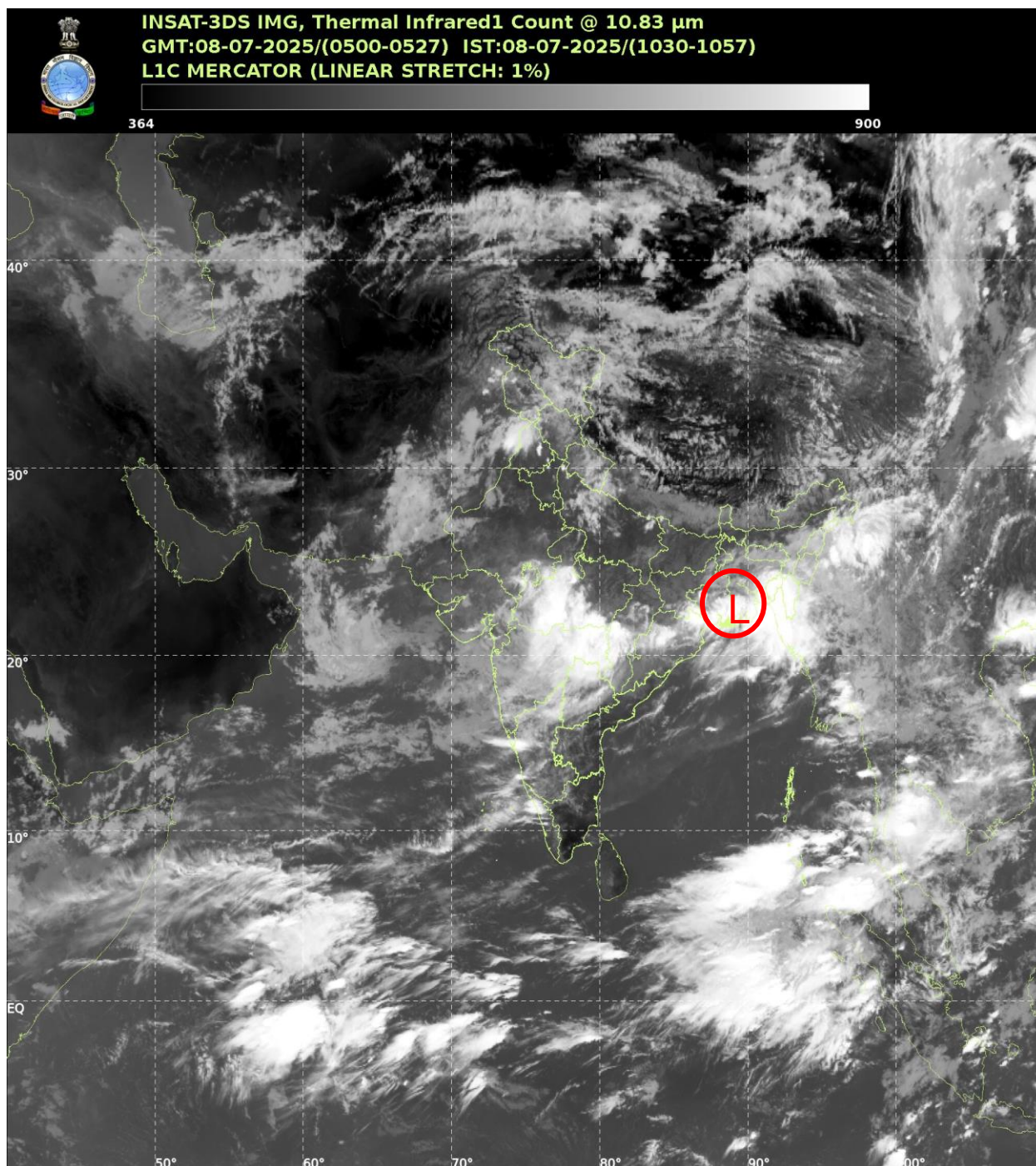
Scattered low and medium clouds with embedded moderate to intense convection lay over eastcentral & southeast Arabian Sea off Karnataka – Kerala coasts and the Lakshadweep Islands area. Scattered low and medium clouds with embedded weak to moderate convection lay over the rest of the Arabian Sea, Gulf of Kutch, Gulf of Cambay, Maldives and Comorin area.

*PROBABILITY OF CYCLOGENESIS (FORMATION OF DEPRESSION) DURING NEXT 168 HRS:

24 HOURS	24-48 HOURS	48-72 HOURS	72-96 HOURS	96-120 HOURS	120-144 HOURS	144-168 HOURS
NIL	NIL	NIL	NIL	NIL	NIL	NIL

***NOTE: EVERY 24HR FORECAST IS VALID UPTO 0300 UTC (0830 IST) OF NEXT DAY**

REMARKS: NIL



L: Low Pressure Area

Cloud distribution: (a) Isolated: <25%, Scattered:25-50%, Broken: 51-75%, Solid:>75%, Convection Intensity: (a) Weak: Cloud Top Temperature(CTT)>-25°C,(b)Moderate:CTT:-25°Cto-40°C,(c)Intense:CTT: -41°Cto -70°Cand(d)Very Intense::Less than -70°C
PROBABILITYOFCYCLOGENESIS(FORMATIONOFDEPRESSION):NIL:0%,LOW:1-33%,MODERATE:34-66%ANDHIGH:67-100%
ThisisaguidanceBulletinforWMO/ESCAPPanelMembercountries.VisitrespectiveNationalwebsitesforCountryspecificBulletins